



OAKFIELD



Railway Cottages, St. Leonards, TN38 0AW

Price Guide £225,000



## Railway Cottages, St. Leonards, TN38 0AW

\*\*\*GUIDE PRICE £225,000 - £250,000\*\*\*

This chain-free two-bedroom cottage on the sought-after Railway Cottages, just moments from the beach, offers the perfect blend of period charm and modern upgrades.

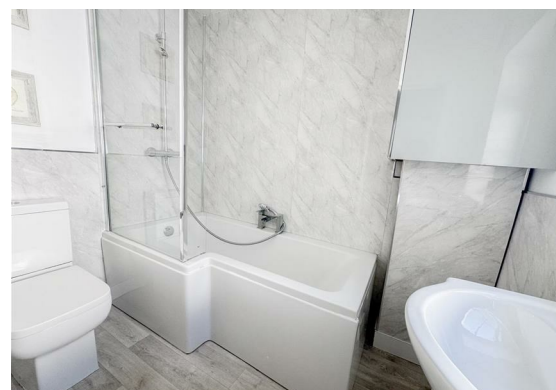
A character home that features a well-designed kitchen/diner ideal for everyday living and entertaining, a comfortable and spacious living room, with a modern fitted bathroom for added convenience. Upstairs, both double bedrooms are bright, generous in size, and thoughtfully finished.

Outside, the property benefits from front and rear courtyard gardens. The south-facing rear courtyard is a genuine sun trap, enjoying all-day sunshine, perfect for relaxing or dining outdoors.

Conveniently located within walking distance of shops, cafés, the seafront, and excellent transport links, this cottage offers practical, low-maintenance coastal living in a peaceful setting.

Whether you're searching for a first home, a coastal getaway, or a solid investment, this chain-free, move-in-ready property deserves your attention.





**Kitchen**  
11'6" x 11'6" (3.51m x 3.51m)

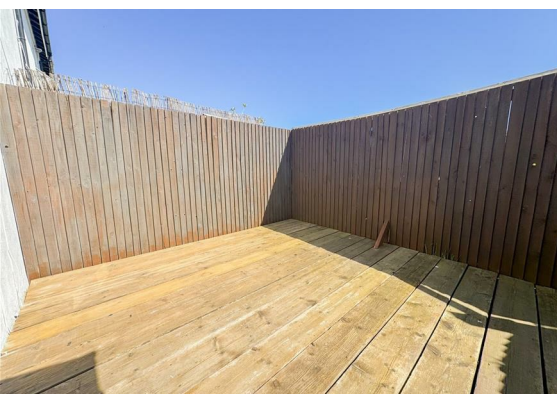
**Living Room**  
15'4" x 11'3" (4.67m x 3.43m)

**Bathroom**

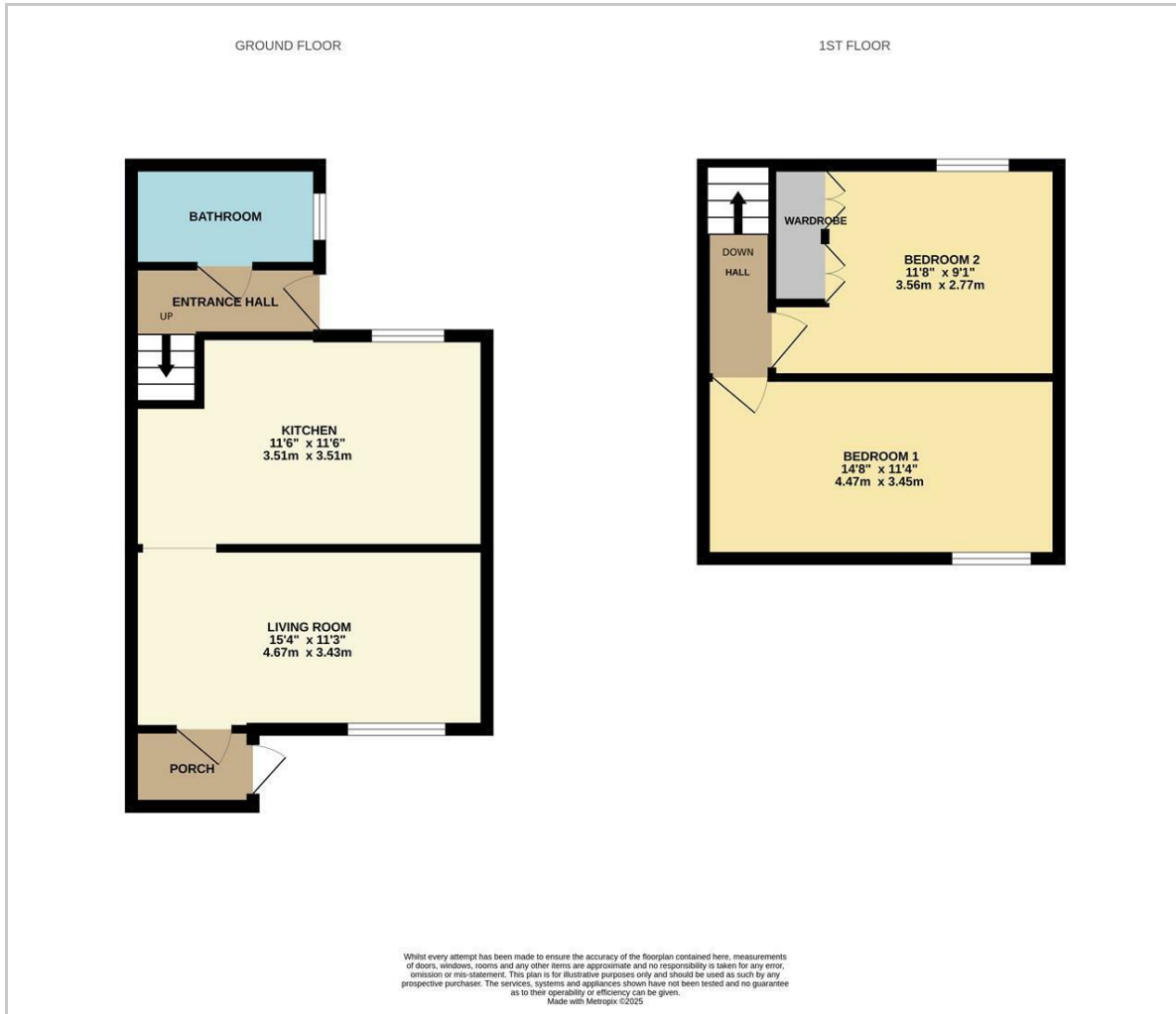
**Bedroom One**  
14'8" x 11'4" (4.47m x 3.45m)

**Bedroom Two**  
11'8" x 9'1" (3.56m x 2.77m)

**Council Tax Band A - £1,784.39 Per Annum**



## Floor Plan

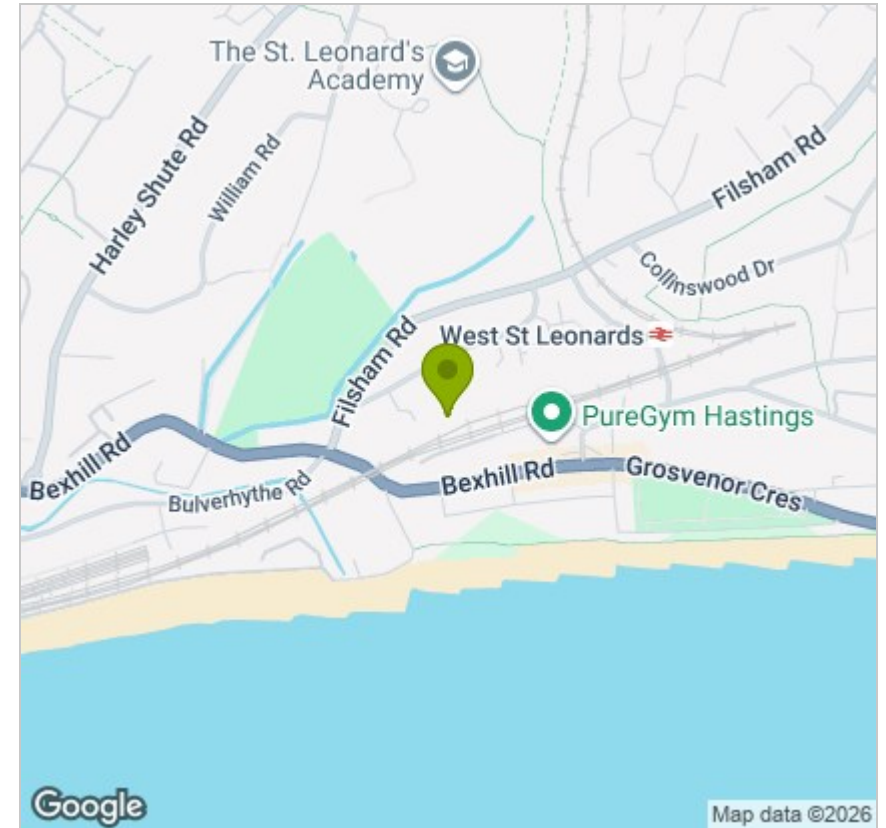


## Viewing

Please contact us on 01424 224700 if you wish to arrange a viewing appointment for this property or require further information.

These particulars, whilst believed to be accurate are set out as a general outline only for guidance and do not constitute any part of an offer or contract. Intending purchasers should not rely on them as statements of representation of fact, but must satisfy themselves by inspection or otherwise as to their accuracy. No person in this firm's employment has the authority to make or give any representation or warranty in respect of the property.

## Area Map



## Energy Efficiency Graph

